



II MEF Navy and Marine Corps Team

03 June 2014

Overall Classification: **UNCLASSIFIED**



Purpose and Agenda

- **Purpose:**

- To provide an overview on the mission of the Marine Corps, mission of the II Marine Expeditionary Force (II MEF), how medical personnel integrate and provide support in accomplishing the operational mission, and identify future challenges.

- **Agenda**

- U.S. Marine Corps Mission
- II MEF Mission
- II MEF Organization and Personnel
- II MEF Operations
- II MEF Medical Organization
- Challenges and Initiatives



U.S. Marine Corps Mission

- The Marine Corps is America's Expeditionary Force in Readiness - a balanced air-ground-logistics team. We are forward deployed and forward engaged: shaping, training, deterring, and responding to all manner of crises and contingencies. We create options and decision space for our Nation's leaders. Alert and ready, we respond to today's crisis with today's force...Today. Responsive and scalable, we team with other Services, interagency partners, and allies. We enable and participate in joint and combined operations of any magnitude. A middleweight force, we are light enough to get there quickly, but heavy enough to carry the day upon arrival, and capable of operating independent of local infrastructure. We operate throughout the spectrum of threats – irregular, hybrid, conventional, or the gray areas where they overlap. Marines are always ready to respond whenever the Nation calls...wherever the President may direct.

- General James F. Amos, USMC
Commandant of the Marine Corps



II MEF Mission

When directed, II MEF deploys and is employed as a Marine Air Ground Task Force (MAGTF) in support of Combatant Commander (CCDR) requirements and for contingency response, major theater war, or other missions across the range of military operations (ROMO); with appropriate augmentation, serves as the core element of a Joint Task Force (JTF); generates, prepares, deploys, and sustains combat ready units and MAGTFs to support CCDR presence, security cooperation, and crisis response; and supports Service and CCDR missions and initiatives as required.

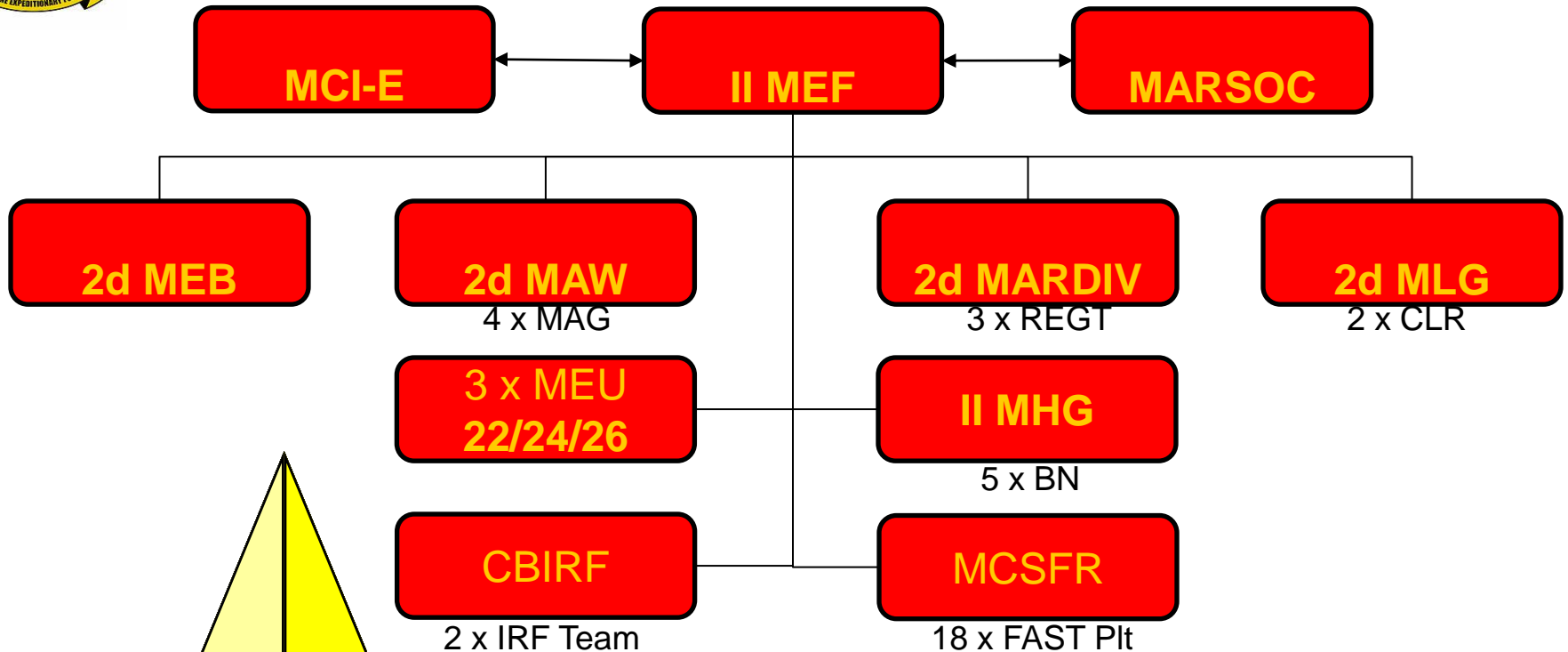
II MEF is:

- One of three standing MEFs – the largest type of MAGTF in the Marine Corps – that comprise the operating forces of the Marine Corps
- Comprised of roughly 52,000 Marines and Sailors at home and deployed world wide
- Concurrently postured at both forward-deployed locations and at home, to rapidly respond to crises and contingencies around the globe—across the ROMO and with a range of force options





II MEF Organization / Personnel



- FY13 Active Duty Personnel

- Camp Lejeune: 32,000
- MCAS Cherry Point: 8,000
- MCAS New River: 5,800
- MCAS Beaufort: 2,400
- Camp Allen VA: 2,500
- Indian Head MD: 1,000

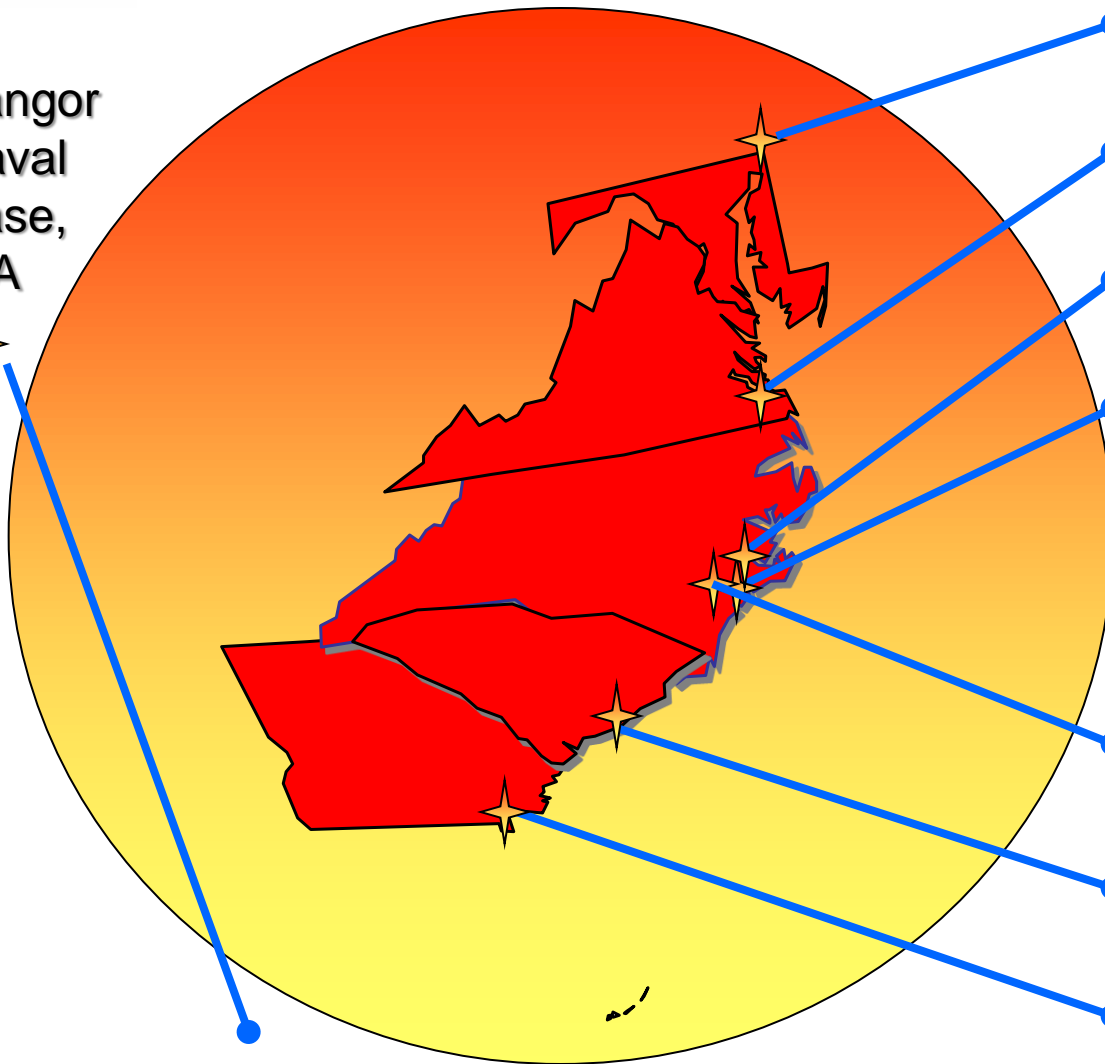
- FY17 Active Duty Personnel

- Camp Lejeune: 26,000
- MCAS Cherry Point: 6,200
- MCAS New River: 5,000
- MCAS Beaufort: 2,800
- Camp Allen VA: 2,500
- Indian Head MD: 1,000

II MEF Geographic Locations



Bangor
Naval
Base,
WA



Indian Head, MD

- Chemical Biological Incident Response Force

Williamsburg, VA (currently)

- Marine Corps Security Force Regiment

Havelock, NC

- 2d Marine Air Wing

Camp Lejeune, NC

(II MEF CE)

- 2d MEB

- 2d Marine Division

- 2d Marine Logistics Group

- II MEF Headquarters Group

- 22, 24, 26 Marine Expeditionary Units

New River, NC

- Two Marine Air Groups (helicopters)

Beaufort, SC

- One Marine Air Group

Kings Bay Naval Base, GA

- Marine Corps Security Force Battalion

Bangor Naval Base, WA

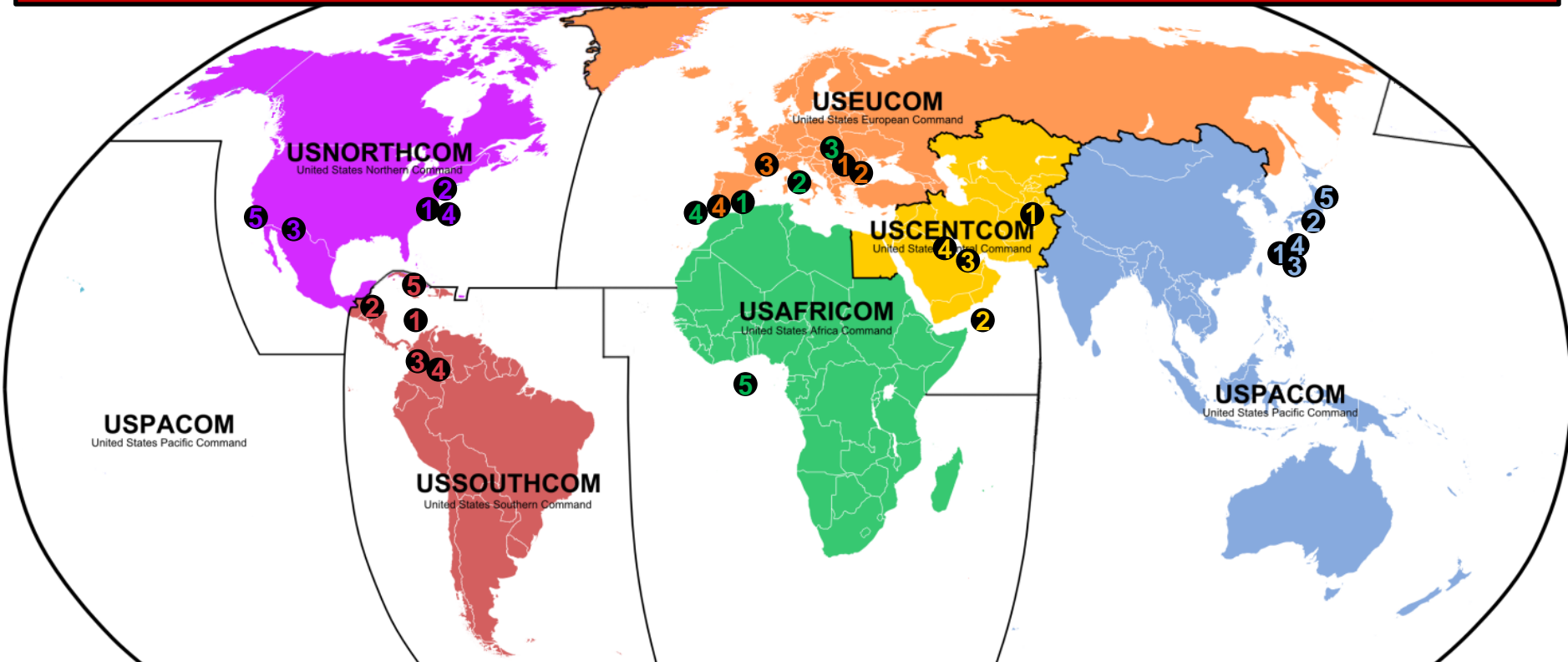
-Marine Corps Security Force Battalion

Updated: 27 May 2014



II MEF Operations

II MEF is globally engaged in every Combatant Command and is poised to respond to crisis.



NORTHCOM

- 1 DSCA (Pre-Po Ops)
- 2 CBIRF
- 3 JTF-North
- 4 MCSFR - RF / DF
- 5 MCSFR - RF / DF

SOUTHCOM

- 1 SPS-HSV
- 2 SPMAGTF-South
- 3 MTTs
- 4 CD/CNT Teams
- 5 FAST-South

AFRICOM

- 1 SPMAGTF-CR
- 2 SPMAGTF-CR (Det A)
- 3 SPMAGTF-CR (Det B)
- 4 FAST- AF / EUR
- 5 APS

EUCOM

- 1 BSRF
- 2 GDP-ISAF
- 3 SPMAGTF-CR TSC
- 4 FAST- AF / EUR

CENTCOM

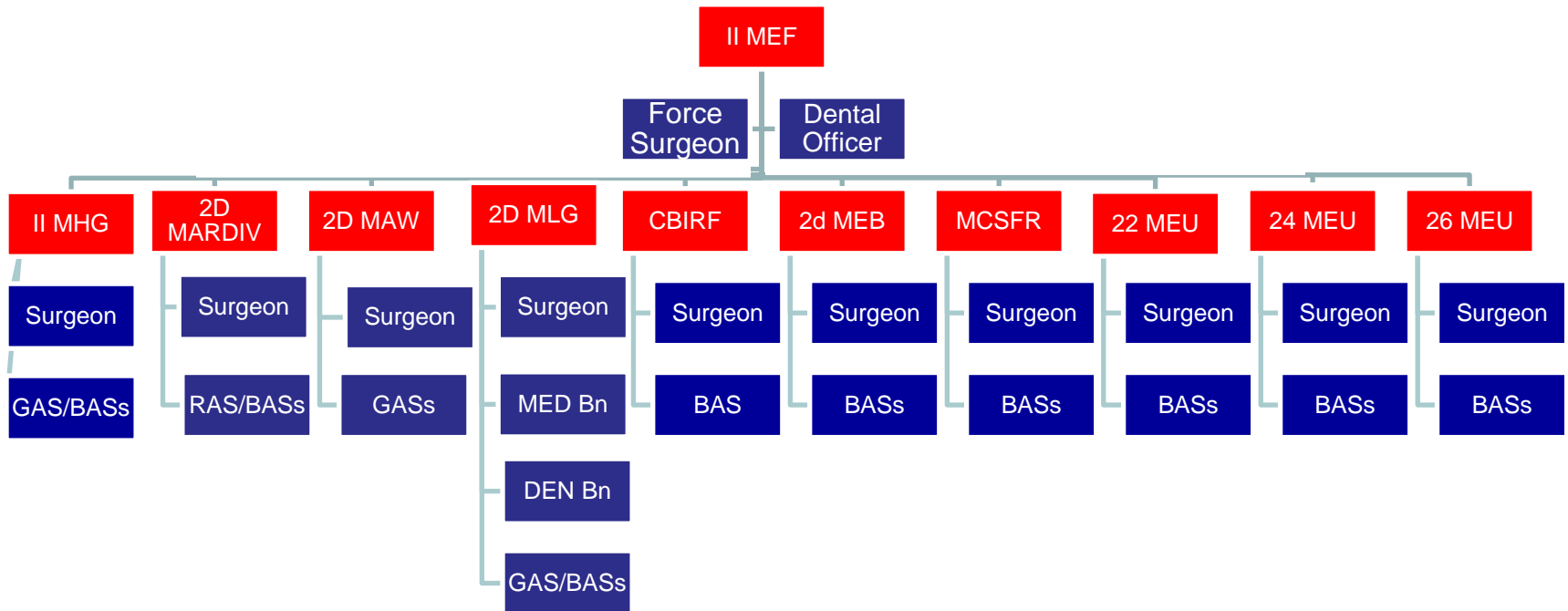
- 1 OEF / RSM
- 2 MEU
- 3 VMAQ
- 4 FAST-CENT

PACOM

- 1 UDP GCE
- 2 VMFA / VMAQ
- 3 HMH / HMLA
- 4 31st MEU / VMA
- 5 FAST-PAC

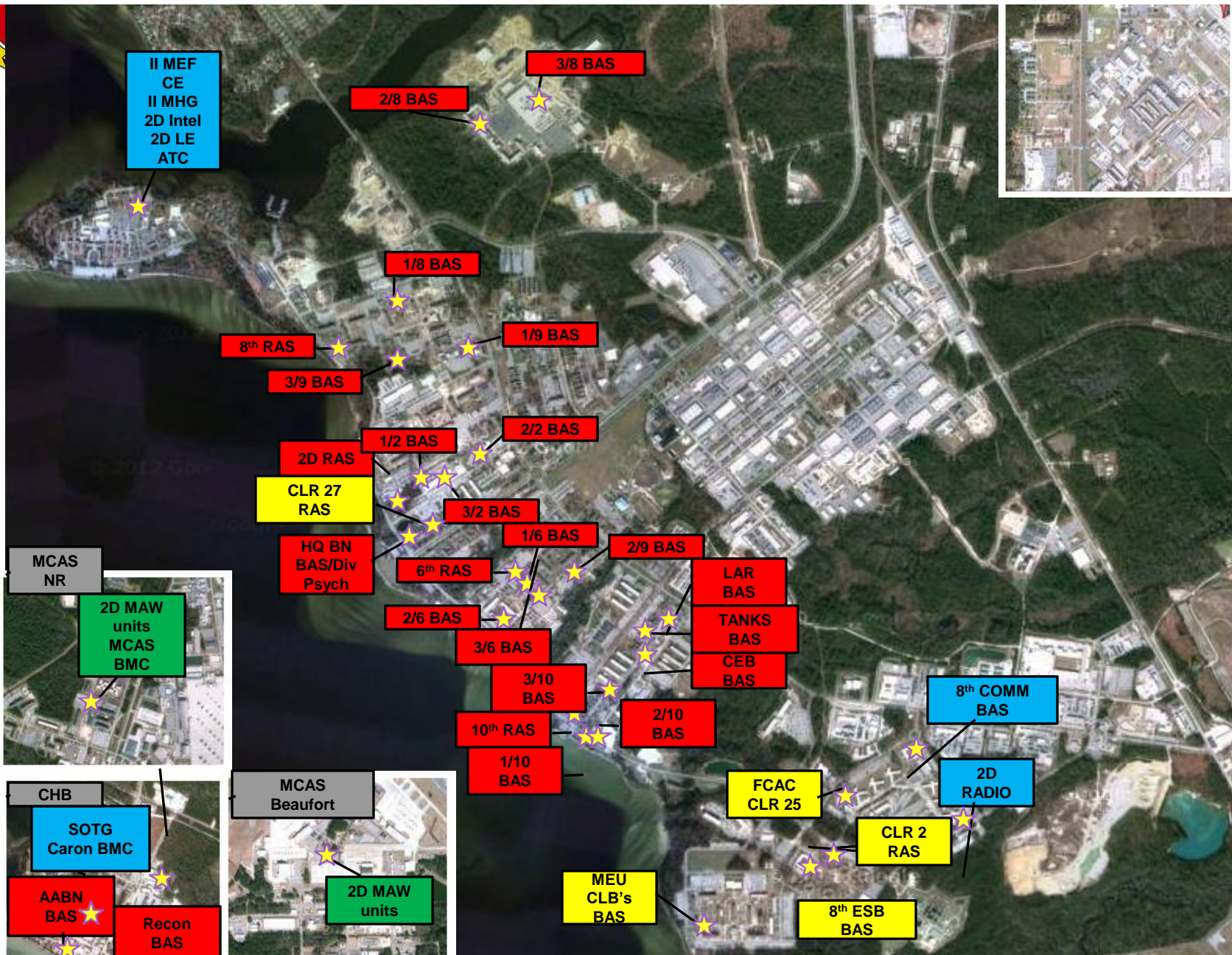


II MEF Medical Organization



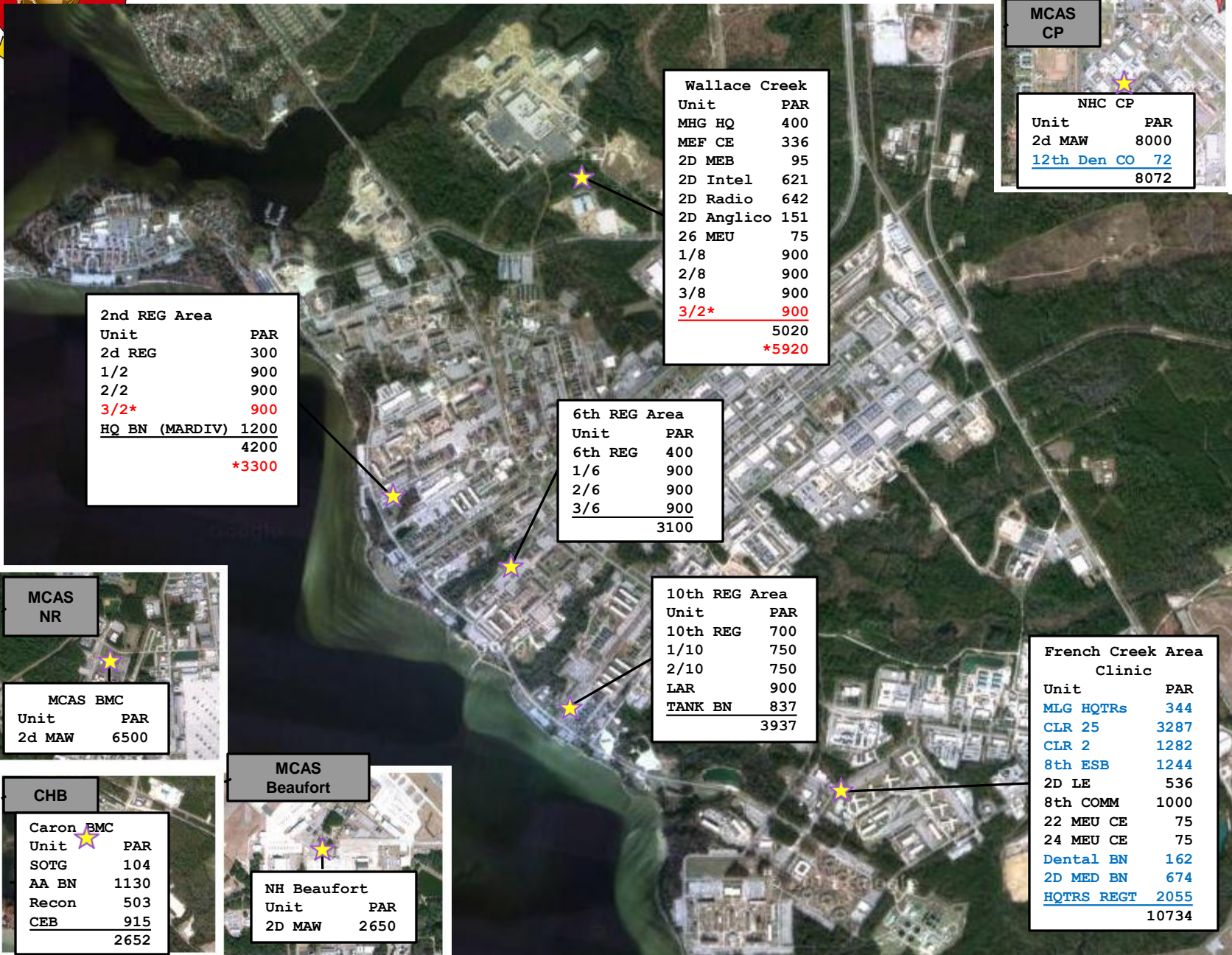
II MEF Medical Locations (Current)

| |
|--------------|
| |
| 2D MARDIV |
| 2D MLG |
| 2D MAW |





Proposed Locations (Post FSRG) – Far Term



| 2nd REG Area | |
|-----------------------|--------------|
| Unit | PAR |
| 2d REG | 300 |
| 1/2 | 900 |
| 2/2 | 900 |
| 3/2* | 900 |
| <u>HQ BN (MARDIV)</u> | <u>1200</u> |
| | 4200 |
| | *3300 |

| Wallace Creek | |
|---------------|--------------|
| Unit | PAR |
| MHG HQ | 400 |
| MEF CE | 336 |
| 2D MEB | 95 |
| 2D Intel | 621 |
| 2D Radio | 642 |
| 2D Anglico | 151 |
| 26 MEU | 75 |
| 1/8 | 900 |
| 2/8 | 900 |
| 3/8 | 900 |
| <u>3/2*</u> | <u>900</u> |
| | 5020 |
| | *5920 |

| MCAS CP | |
|--------------------|-----------|
| NHC CP | |
| Unit | PAR |
| 2d MAW | 8000 |
| <u>12th Den CO</u> | <u>72</u> |
| | 8072 |

| 6th REG Area | |
|--------------|------|
| Unit | PAR |
| 6th REG | 400 |
| 1/6 | 900 |
| 2/6 | 900 |
| 3/6 | 900 |
| | 3100 |

| MCAS NR | |
|----------|------|
| MCAS BMC | |
| Unit | PAR |
| 2d MAW | 6500 |

| 10th REG Area | |
|----------------|------------|
| Unit | PAR |
| 10th REG | 700 |
| 1/10 | 750 |
| 2/10 | 750 |
| LAR | 900 |
| <u>TANK BN</u> | <u>837</u> |
| | 3937 |

| French Creek Area Clinic | |
|--------------------------|-------------|
| Unit | PAR |
| <u>MLG HQTRs</u> | <u>344</u> |
| CLR 25 | 3287 |
| CLR 2 | 1282 |
| 8th ESB | 1244 |
| 2D LE | 536 |
| 8th COMM | 1000 |
| 22 MEU CE | 75 |
| 24 MEU CE | 75 |
| Dental BN | 162 |
| 2D MED BN | 674 |
| <u>HQTRS REGT</u> | <u>2055</u> |
| | 10734 |

| CHB | |
|-----------|------|
| Caron BMC | |
| Unit | PAR |
| SOTG | 104 |
| AA BN | 1130 |
| Recon | 503 |
| CEB | 915 |
| | 2652 |

| MCAS Beaufort | |
|---------------|------|
| NH Beaufort | |
| Unit | PAR |
| 2D MAW | 2650 |



Challenges and Initiatives

- **One standard of medical care (MTF or Operational)**
 - Marine Centered Medical Home (MCMH): USMC-wide Program
 - BUMED and HQMC I&L are working solutions for temp and permanent facilities, Contract staff and IT / training support
 - Benefits – Improved communication and coordination, access to care, and readiness
 - One example: Decrease working hours non-urgent ED visits 80% and total non-urgent ED visits 55%
- **Medical Staff / “New Normal” Operations**
 - Future BISOG billet structure needs to match USMC missions balanced with garrison medical requirements in our current fiscal environment
 - 54% of medical providers deployed with only 25 % of total MEF deployed
 - Expect increased small task organized units (CR, TSC, HA/DR...)
 - CASEVACs out of remote locations such as Africa
 - ECASEVAC with aeromedical trained Corpsman on MV-22
- **High Risk Marines and Sailors**
 - Medically complex Marine and Sailor Program (MCMSP)
 - Sports Medicine



Questions???