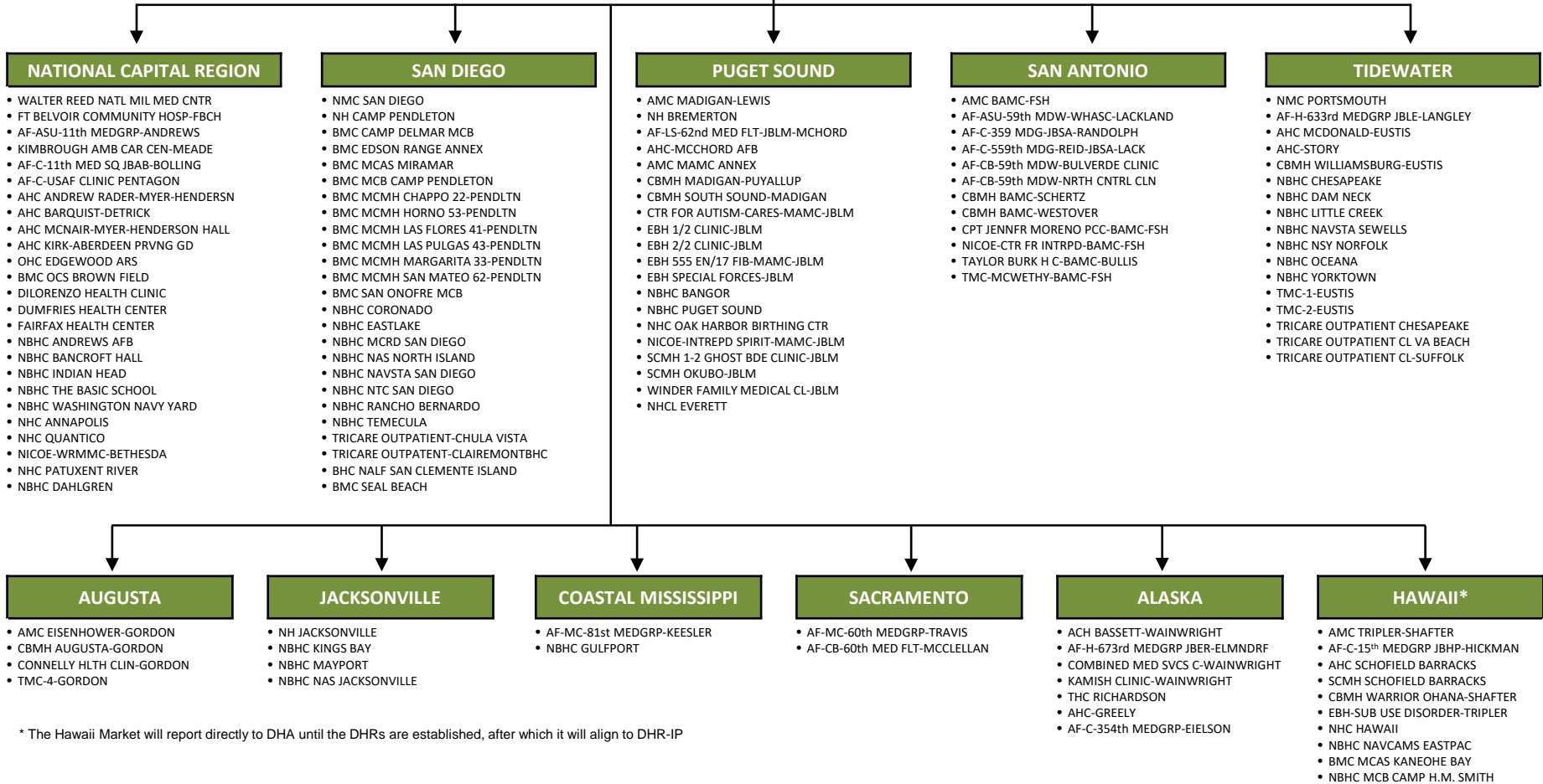




Direct Reporting Markets

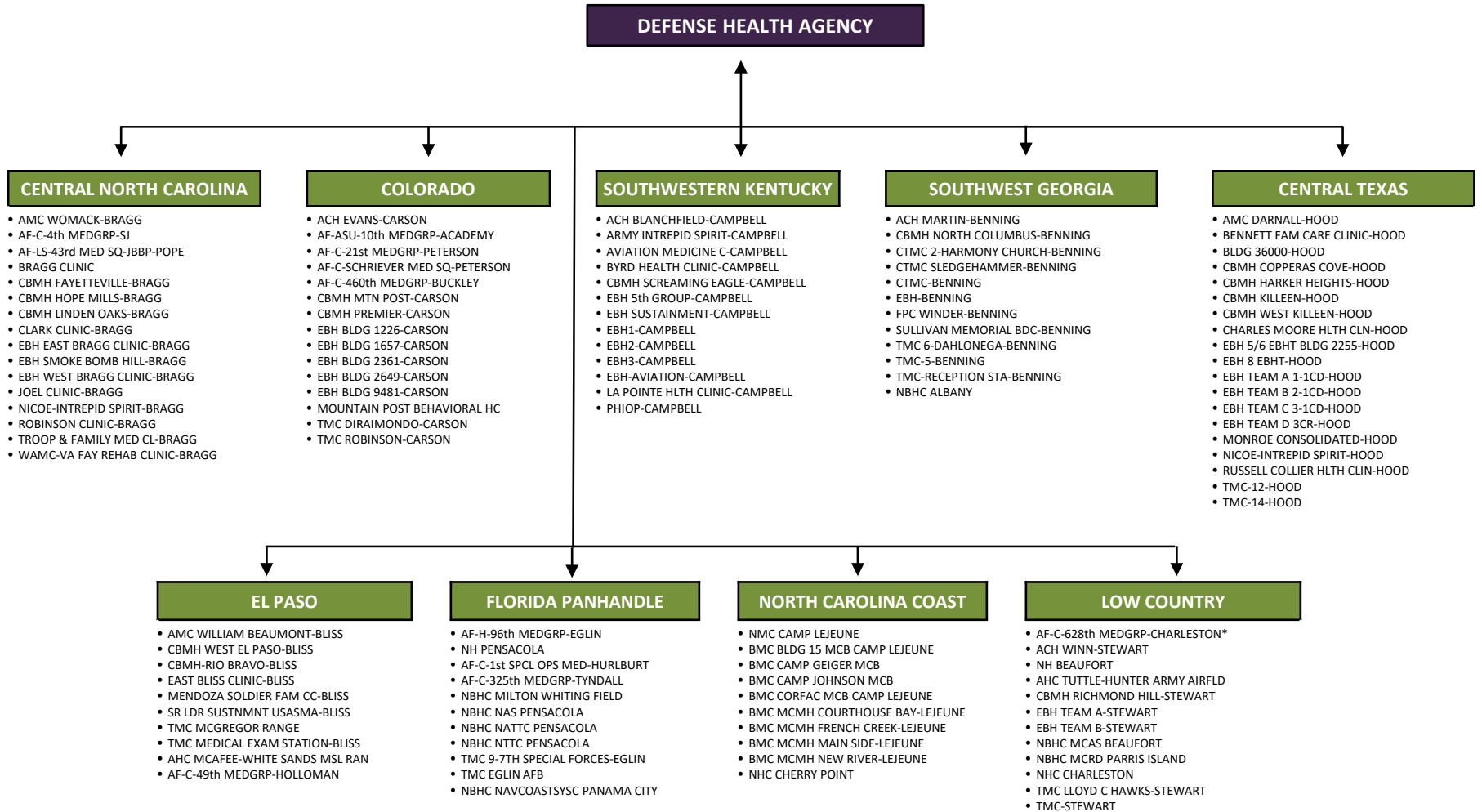
DEFENSE HEALTH AGENCY



* The Hawaii Market will report directly to DHA until the DHRs are established, after which it will align to DHR-IP



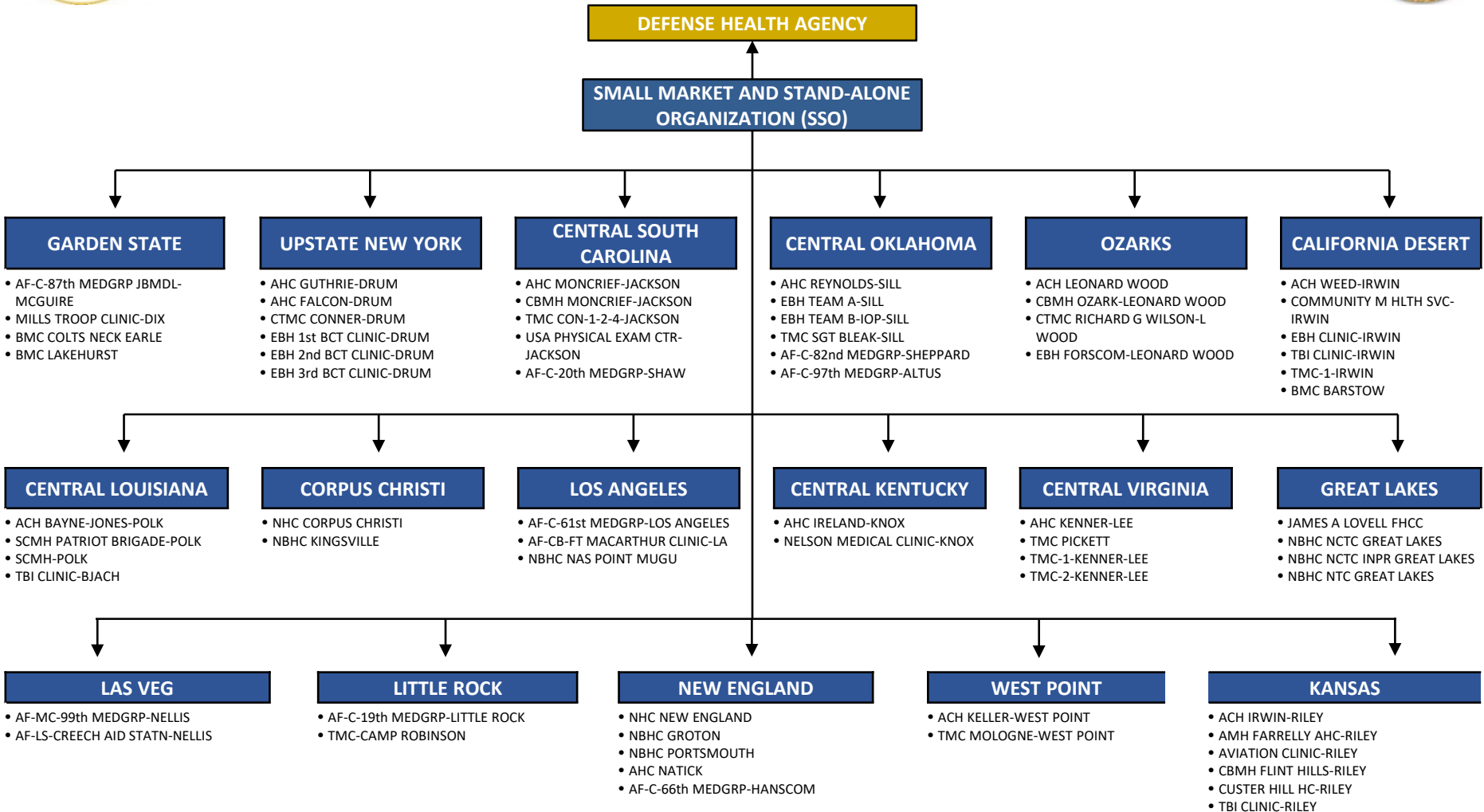
Direct Reporting Markets



* 628th Medical Group - Charleston will temporarily align to the NCR Market until Low Country Market is established

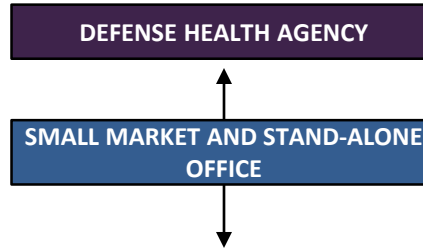


SSO – Small Markets





SSO – Stand Alone MTFs

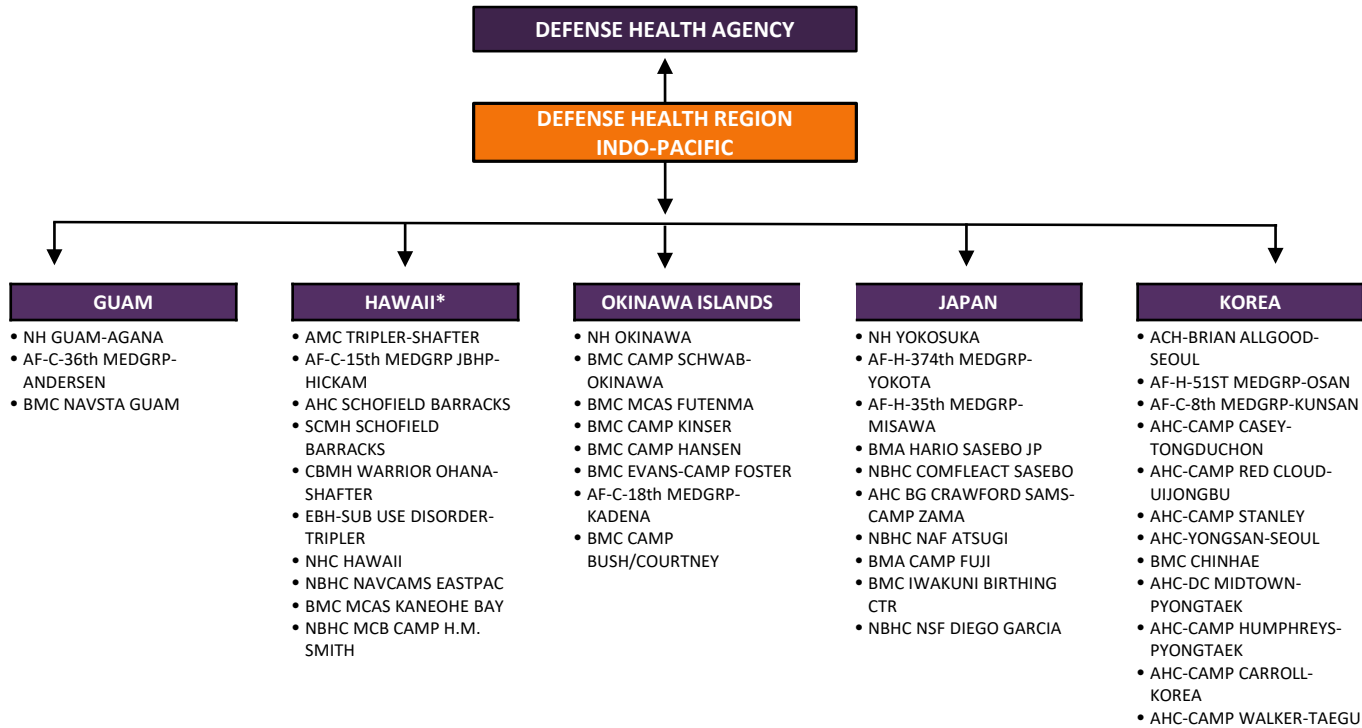


- | | | |
|--|--|--|
| <ul style="list-style-type: none"> • AF-C-28th MEDGRP-ELLSWORTH • AF-C-319th MEDGRP-GRAND FORKS • AF-C-509th MEDGRP-WHITEMAN • AF-C-55th MEDGRP-OFFUTT • AF-C-5th MEDGRP-MINOT • AF-C-45th MEDGRP-PATRICK • AF-C-30th MEDGRP-VANDENBERG • AF-C-27th SPCLOPS MDGRP-CANNON • AF-C-355th MEDGRP-DM • AF-C-377th MEDGRP-KIRTLAND • AF-MC-88th MEDGRP-WRIGHT-PAT • AF-C-412th MEDGRP-EDWARDS • AF-C-2nd MEDGRP-BARKSDALE • AF-C-375th MEDGRP-SCOTT • AF-C-341st MEDGRP-MALMSTROM • AF-C-366th MEDGRP-MT HOME • AF-C-75th MEDGRP-HILL • AF-C-90th MEDGRP-FE WARREN • AF-C-92nd MEDGRP-FAIRCHILD • AF-C-23rd MEDGRP-MOODY & AF-EC-93rd AGOW-MOODY • AF-C-14th MEDGRP-COLUMBUS • AF-C-9th MEDGRP-BEALE | <ul style="list-style-type: none"> • AF-C-6th MEDGRP-MACDILL & AF-CB-BRANDON COMM CLINIC-MIL • AF-C-56th MEDGRP-LUKE • AF-LS-ARNOLD ENG DEV COMPLEX • AF-C-436th MEDGRP-DOVER • AF-C-42nd MEDGRP-MAXWELL • AF-C-78th MEDGRP-ROBINS • AF-C-72nd MEDGRP-TINKER & AF-EC-552nd OPS GRP CLN-TINKER • AF-C-71st MEDGRP-VANCE • AF-C-7th MEDGRP-DYESS • AF-C-17th MEDGRP-GOODFELLOW • AF-C-47th MEDGRP-LAUGHLIN • NBHC EL CENTRO • NBHC MERIDIAN • NBHC KEY WEST • NBHC NSA MID-SOUTH • NHC LEMOORE • NBHC FALLON • NBHC WPNSCEN CRANE • BMC MECHANICSBURG • NBMC NAVAL BUSINESS CENTER • NBHC FORT WORTH • NBHC PORT HUENEME | <ul style="list-style-type: none"> • NBHC SARATOGA SPRINGS • NH GUANTANAMO BAY • NH TWENTYNINE PALMS • BMC BRIDGEPORT • NBHC NAS BELLE CHASE • NBHC NAVWPNCEN CHINA LAKE • BMC YUMA • AHC YUMA PROVING GROUND • AHC MONTEREY • AHC-VA MG GOURLEY CL-MONTEREY • SOUTHCOM CLINIC-GORDON • AHC R W BLISS-HUACHUCA • CAMP SHELBY • AHC RODRIGUEZ-BUCHANAN • AHC ROCK ISLAND ARSENAL • AHC FOX-REDSTONE ARSENAL • AHC INDIANTOWN GAP • AHC DUNHAM-CARLISLE BARRACKS • AHC FILLMORE-NEW CUMBERLAND • AHC LETTERKENNY ARMY DEPOT • AHC LYSER-RUCKER • AHC MUNSON-LEAVENWORTH & TMC #1-USDB-LEAVENWORTH & TMC #2-USDB 2-LEAVENWORTH • RED RIVER ARMY DEPOT • AF-C-22nd MEDGRP-MCCONNELL |
|--|--|--|



Defense Health Region Indo-Pacific

Defense Health Region Indo-Pacific



* The Hawaii Market will report directly to DHA until the DHRs are established, after which it will align to DHR-IP



Defense Health Region Europe

Defense Health Region Europe

